

DS9208

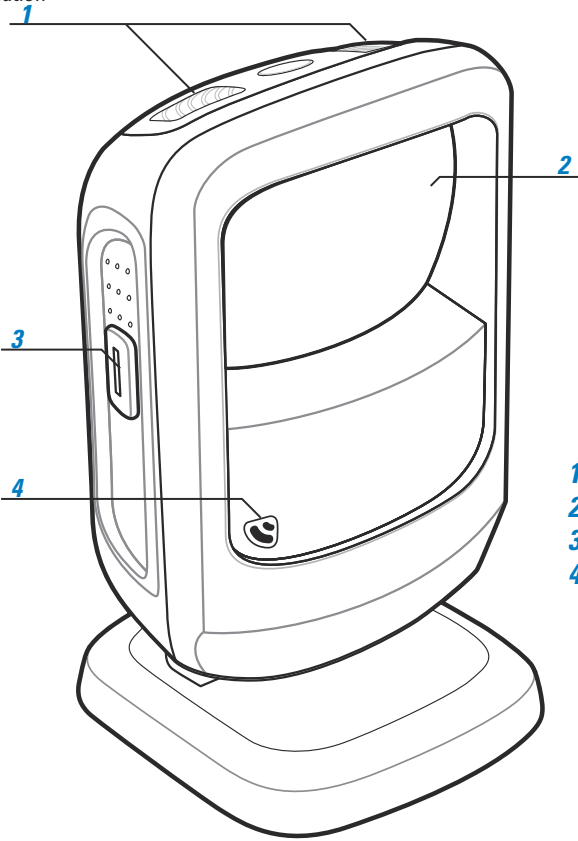
Quick Start Guide

<http://www.zebra.com/ds9208>

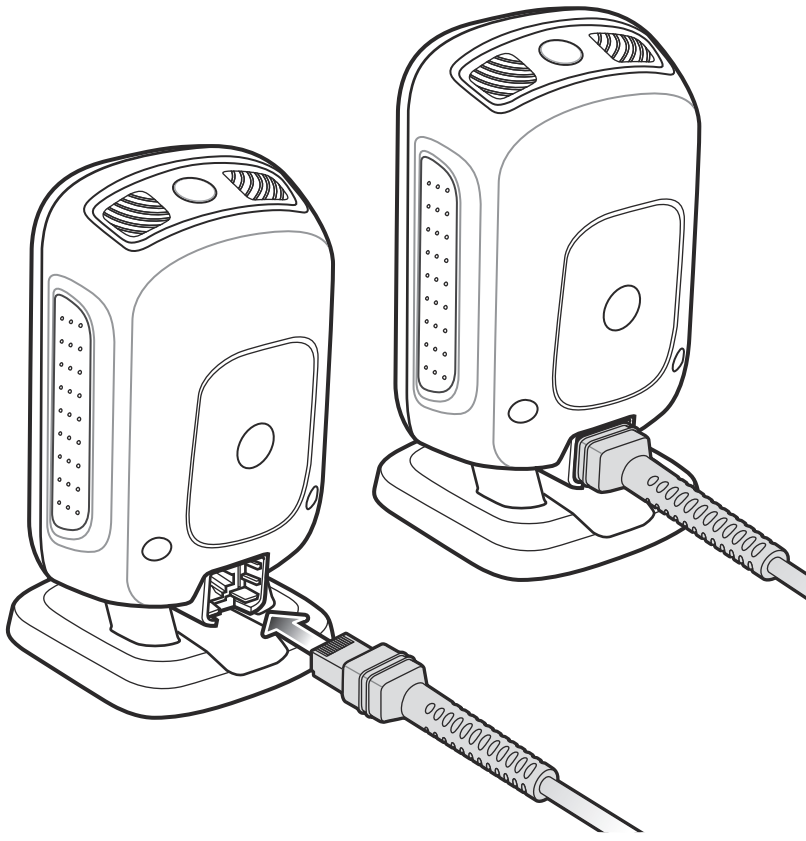
See Product Reference Guide for detailed information

CORD ATTACHMENT

POST IN WORK AREA

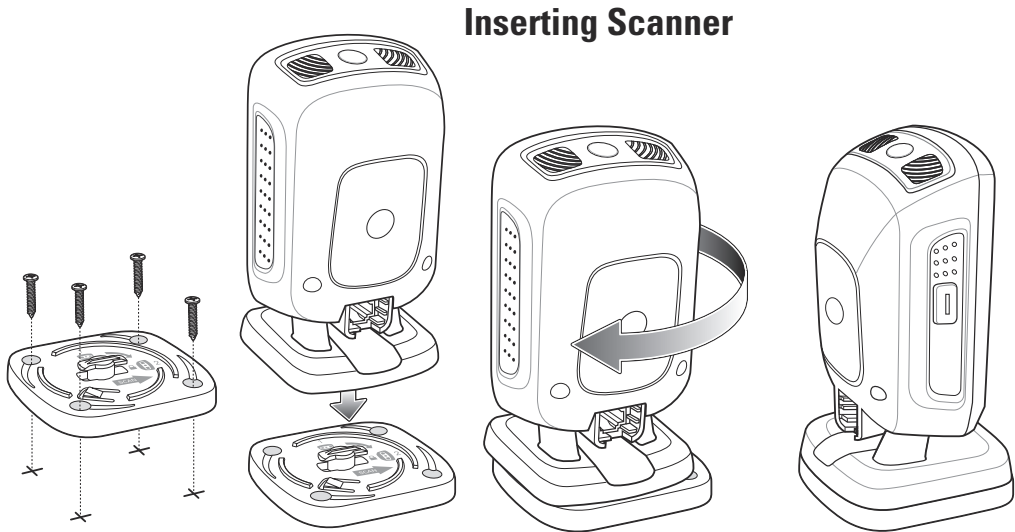
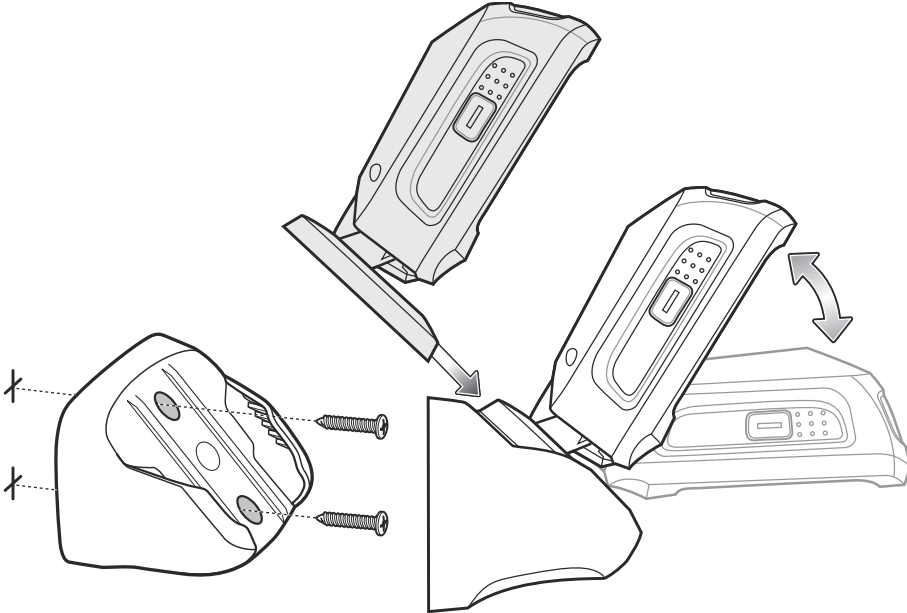


- 1 LED Indicators
- 2 Scan Window
- 3 Scan Trigger
- 4 Beeper



WALL MOUNTING

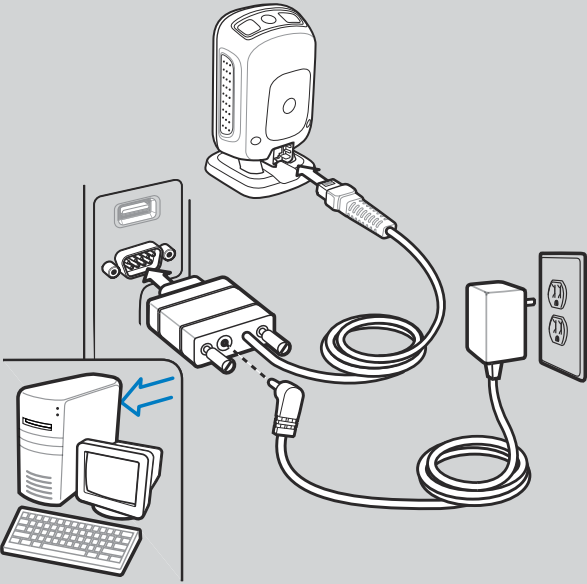
TABLE TOP MOUNTING



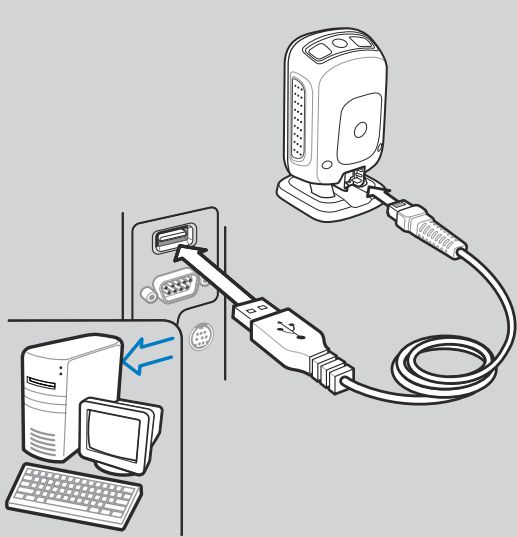
HOST INTERFACES

NOTE: Cables may vary depending on configuration

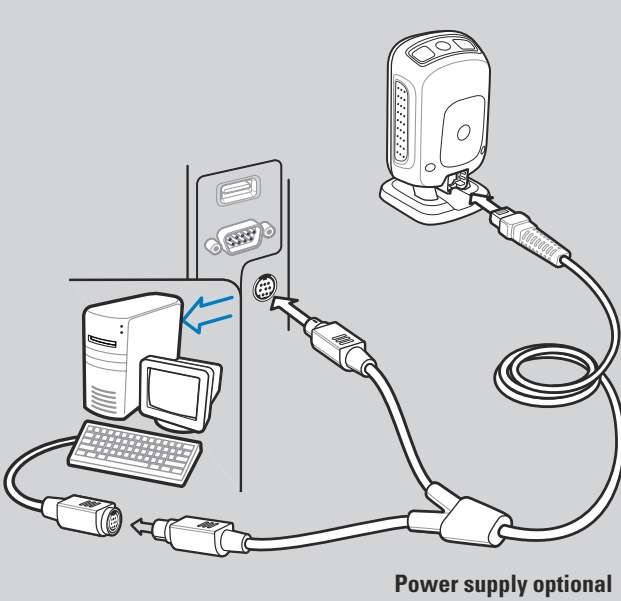
RS-232



USB

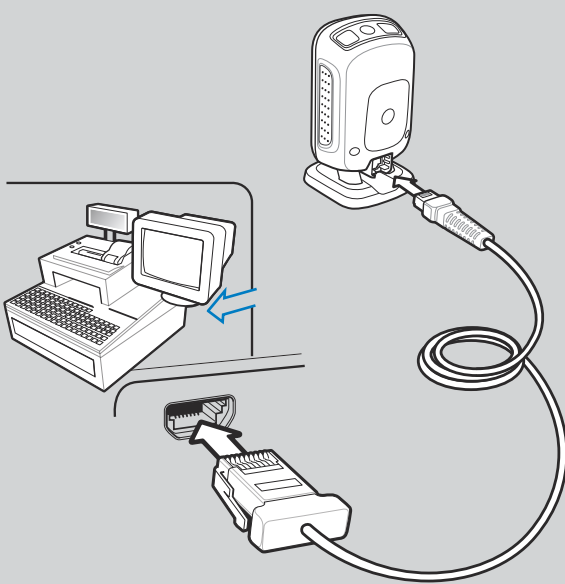


Keyboard Wedge



Power supply optional

IBM 46XX



TROUBLESHOOTING

Scanner not working

No power to scanner

Check system power; ensure power supply, if required, is connected

Incorrect interface cable used

Ensure that correct interface cable is used

Interface/power cables are loose

Ensure all cable connections are secure

Scanner not decoding bar code

Scanner not programmed for bar code type

Ensure scanner is programmed to read type of bar code being scanned

Bar code unreadable

Ensure bar code is not defaced; try scanning test bar code of same type
Ensure bar code is not defaced; try scanning test bar code of same type

Distance between scanner and bar code incorrect

Move scanner closer to or further from bar code

Scanner decoding bar code, but data not transmitting to host

Scanner not programmed for correct host interface

Scan appropriate host parameter bar codes

Interface cable is loose

Ensure all cable connections are secure

Scanned data incorrectly displayed on host

Scanner not programmed for correct host interface

Scan appropriate host parameter bar codes

DS9208 PROGRAMMING BAR CODES

Set Defaults



SET DEFAULTS

Enter Key (Carriage Return/Line Feed)



<DATA><SUFFIX 1>

IBM 46XX Host Types



PORT 5B



PORT 9B

USB Host Types



HID KEYBOARD EMULATION



SNAP! WITH IMAGING

Keyboard Wedge Host Types



IBM PC/AT and IBM PC COMPATIBLE



PORT 17



IBM HAND-HELD USB



SNAP! WITHOUT IMAGING

Scan **ONE** of the following country types



NORTH AMERICAN



ITALIAN

RS-232 Host Types



STANDARD RS-232



NIXDORF RS-232 MODE B



FRENCH



SWEDISH



ICL RS-232



FUJITSU RS-232



FRENCH CANADIAN



UK ENGLISH



NIXDORF RS-232 MODE A



OPOS/JPOS



SPANISH



JAPANESE

