

Specification

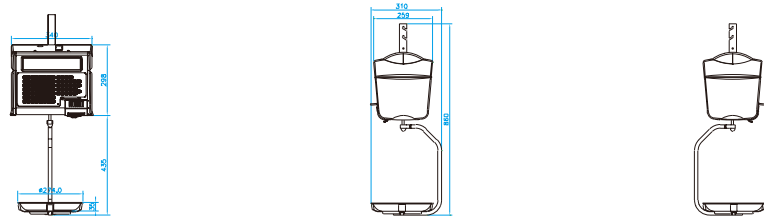
Model	SM100B	SM100P	SM100EV	SM100H
Capacity	3/6kg:1-2g 6/15kg:2-5g 15/30kg:5-10g			
Display	19 Segments LCD with green back-light Tare Weight display: 4 digits Weight display: 5 digits Unit Price display: 6 digits Total Price display: 7 digits			
Number of preset keys	40	40	74	76
Memory capacity	1M(standard) 2M (option)			
Display resolution	1/3,000 (dual range)			
Paper width	Max 60mm(label) 60mm(receipt)			
Speed	80mm/sec (label) 105mm/ sec (receipt)			
Label size	Max 60 (W) x220 (L) mm			
Power source	220V (50/60Hz)			
Operating teperature	-10℃ to 40℃			
Standad interface	RS232C, Cash, Drawer, Ethernet, WirelessRF IEEE 802.11b(option)			
Dimension(in mm) (W)x(L)x(H)	386 x 416 x 128	386 x 478 x 480	386 x 416 x 550	350 x 369 x 844
Net weight	9.9kg	11.7kg	11.1kg	11.5kg

SM-100 Series

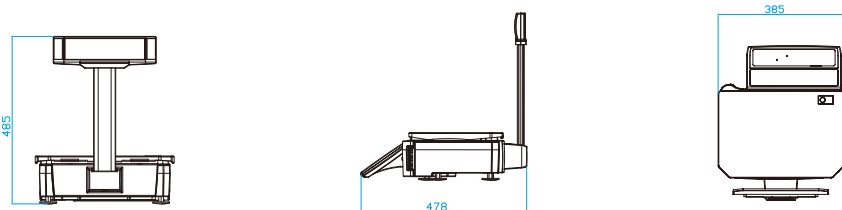
Scale Printer



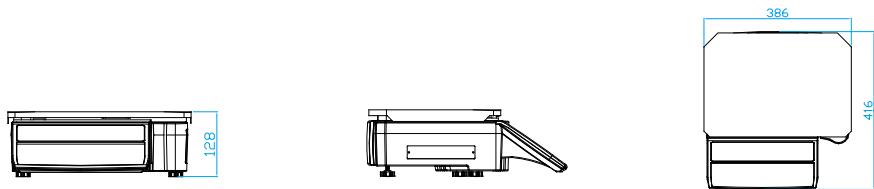
SM-100H



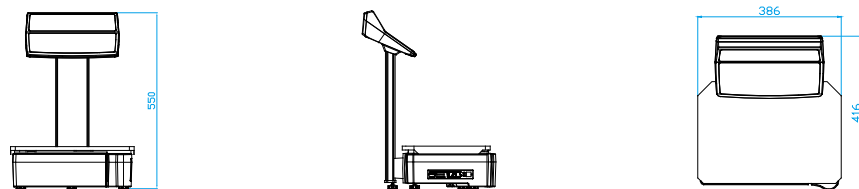
SM-100P



SM-100B



SM-100EV

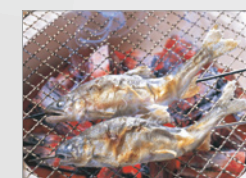
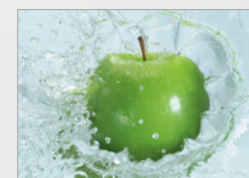
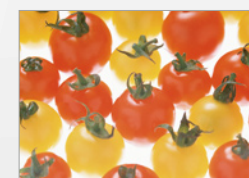


*Specifications are subject to change without notice.

SM-100 Series

Scale Printer

- Direct thermal/high speed thermal printer
- Easy and quick loading of receipt or label
- Update the date and time automatically with the built-in clock
- Quick response to the weight change
- Wireless LAN network 2-in-1 Bridge(optional)
- 19 Segments Green LCD Display
- RS232 and Ethernet interface for data updating



SM-100EV



SM-100H



SM-100P



SM-100B